

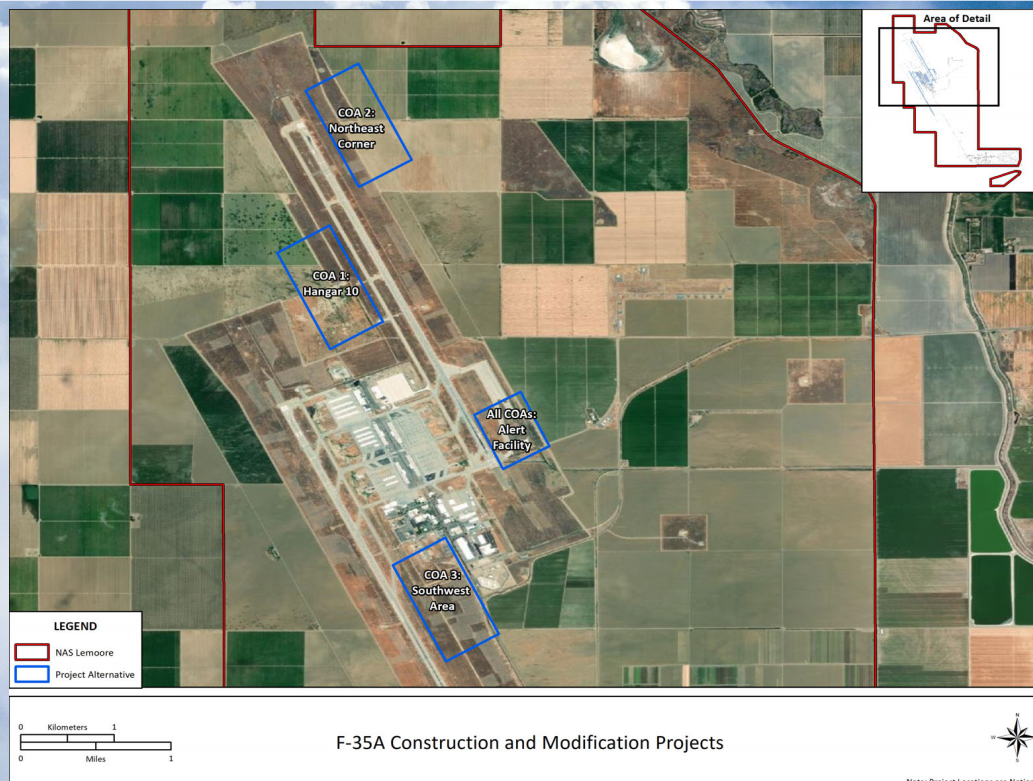


Air National Guard F-15EX Eagle II & F-35A Lightning II Operational Beddowns Environmental Impact Analysis Process



PROPOSED CONSTRUCTION AT NAVAL AIR STATION LEMOORE

While each of the three existing F-15C/D locations for the proposed beddown offer basic necessary facilities, no one location has all of the infrastructure and facilities to support the beddown, and the NAS Lemoore location has minimal existing infrastructure to support the beddown. To accommodate the F-35A beddown, Naval Air Station Lemoore in Lemoore, CA would require the facility construction projects at locations displayed on the map. All construction activities would occur within the boundaries of the Naval Air Station.



F-35A Construction Projects